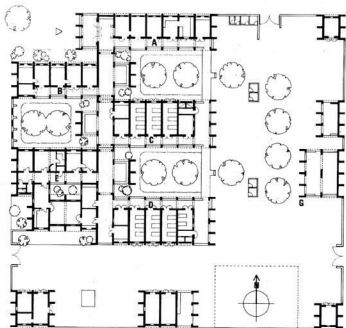


**DOMINIC MICHAELIS  
ASSOCIATES**  
**Health centre, Diema,  
Republic of Mali**

**CLIENT** Ministry of Public Health, Mali.  
**FUNDING** European Development Fund.  
**DESCRIPTION** The new health centre plus a hospital extension, several rural maternity clinics and dispensaries and much rehabilitation of existing buildings make up the construction side of a primary health care project in the Niuro region. The centre consists of a dispensary, consulting and operating suite, and a shelter and kitchen for the patients' relatives. Limited electrical power is supplied by a combination of a diesel alternator and photovoltaic plant.

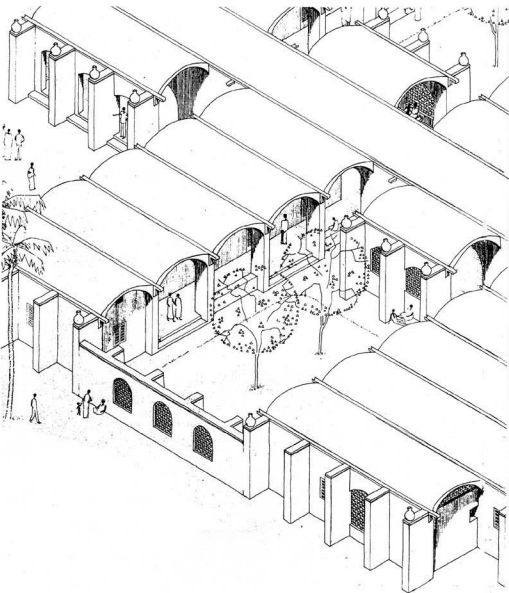
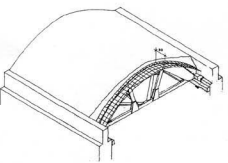
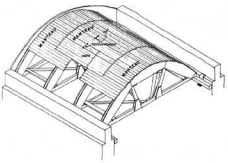
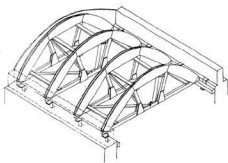
**STRUCTURE** Walls and buttresses are of sun-dried stabilised earth blocks. The roof construction is inspired by the research and buildings of the BHEDA Group in Senegal. The *in situ* concrete vaults are cast over a temporary corrugated-iron formwork and are protected from the sun by a layer of raised interlocking 'sun tiles'.

**COMPLETION** Autumn 1986.  
**CREDITS** Project architect: Alex Billeter; structural engineers: Anthony Hunt Associates; services engineers: Greenshield Associates; quantity surveyor: Widnell & Trollope (Benelux).



plan (scale 1:800)

key  
A, administration  
B, dispensary  
C, men's ward  
D, women's ward  
E, technical block  
F, doctors' quarters  
G, families' block



above: three stages of construction  
right: isometric

# **DOMINIC MICHAELIS ASSOCIATES**

## **Health centre, Diema, Republic of Mali**

- CLIENT** Ministry of Public Health, Mali.
- FUNDING** European Development Fund.
- DESCRIPTION** The new health centre plus a hospital extension, several rural maternity clinics and dispensaries and much rehabilitation of existing buildings make up the construction side of a primary health care project in the Niuro region. The centre consists of a dispensary, consulting and operating suite, and a shelter and kitchen for the patients' relatives. Limited electrical power is supplied by a combination of a diesel alternator and photovoltaic plant.
- STRUCTURE** Walls and buttresses are of sun-dried stabilised earth blocks. The roof construction is inspired by the research and buildings of the BREDA Group in Senegal. The *in-situ* concrete vaults are cast over a temporary corrugated-iron formwork and are protected from the sun by a layer of raised interlocking 'sun tiles'.
- COMPLETION** Autumn 1986.
- CREDITS** Project architect: Alex Billeter; structural engineers: Anthony Hunt Associates; services engineers: Greenshield Associates; quantity surveyor: Widnell & Trollope (Benelux).